



MONTHLY MEMBERSHIP PROGRESS REPORT

District 5 SW

Results as of: 5/31/2017

GMT: Judy Hankom

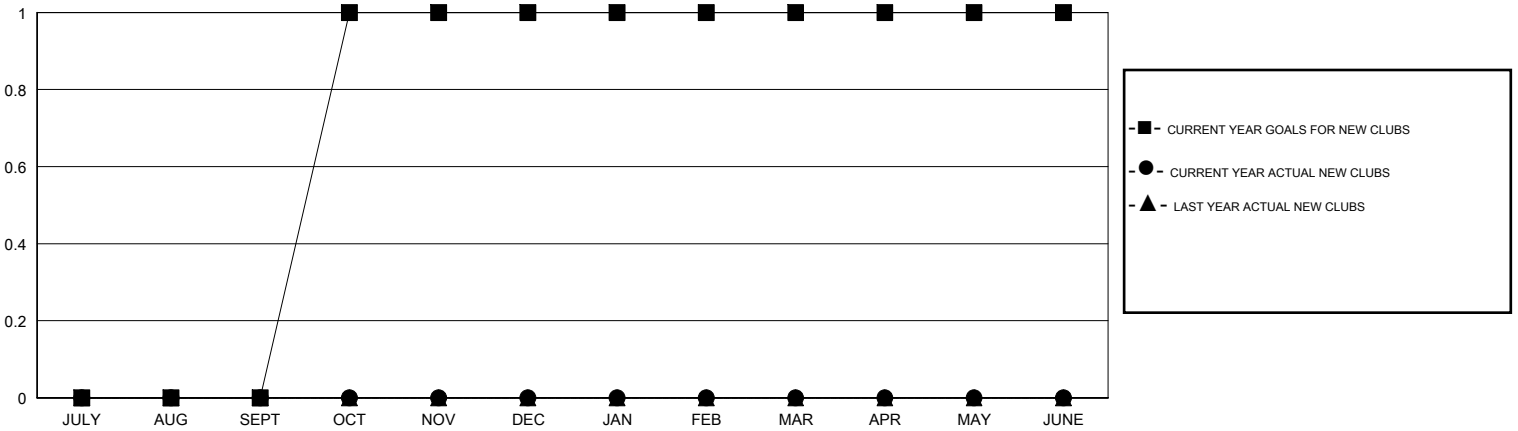
LOCATION SOUTH DAKOTA

GMT CA

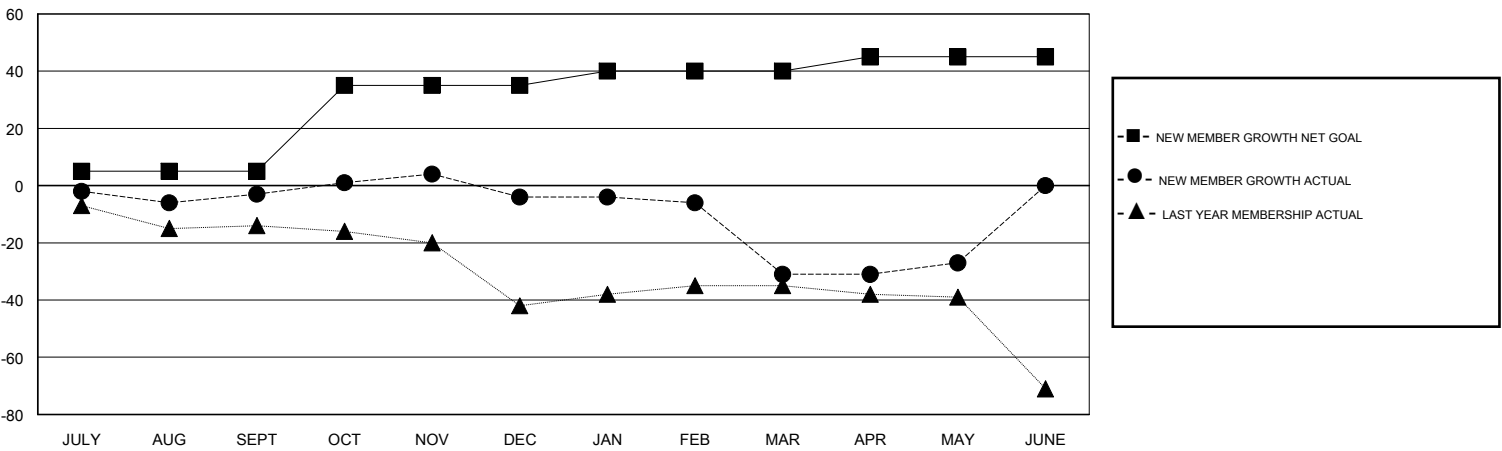
Clubs			
RESULTS FOR 2016-2017			
QUARTER	NEW CLUB GOAL	NEW CLUBS	DROPPED CLUBS
JULY/AUG/SEPT	0	0	0
OCT/NOV/DEC	1	0	0
JAN/FEB/MAR	0	0	0
APR/MAY/JUNE	0	0	0

Members			
RESULTS FOR 2016-2017			
QUARTER	NEW MEMBER GROWTH NET GOAL (not reinstated or transfers)	NEW MEMBER GROWTH ACTUAL (not reinstated or transfers)	DROPPED MEMBERS ACTUAL (including transfers)
JULY/AUG/SEPT	5	9	12
OCT/NOV/DEC	30	15	16
JAN/FEB/MAR	5	18	45
APR/MAY/JUNE	5	18	14

GOALS AND ACTUAL NEW CLUBS CUMULATIVE



GOALS AND ACTUAL MEMBERS CUMULATIVE



DROPPED CLUBS: 0	21 CLUBS OF 34 ADDED 1 OR MORE NEW MEMBERS	<u>GENDER DISTRIBUTION</u>	
DROPPED MEMBERS		MALE	605 (73.69%)
DECEASED	10	FEMALE	216 (26.31%)
CLUB CANCELLED	0	TOTAL FAMILY UNIT MEMBERS	136
OTHER	77	FAMILY MEMBERS PAYING HALF DUES	69
TOTAL	87	CLICK HERE FOR CUMULATIVE MEMBERSHIP DATA	